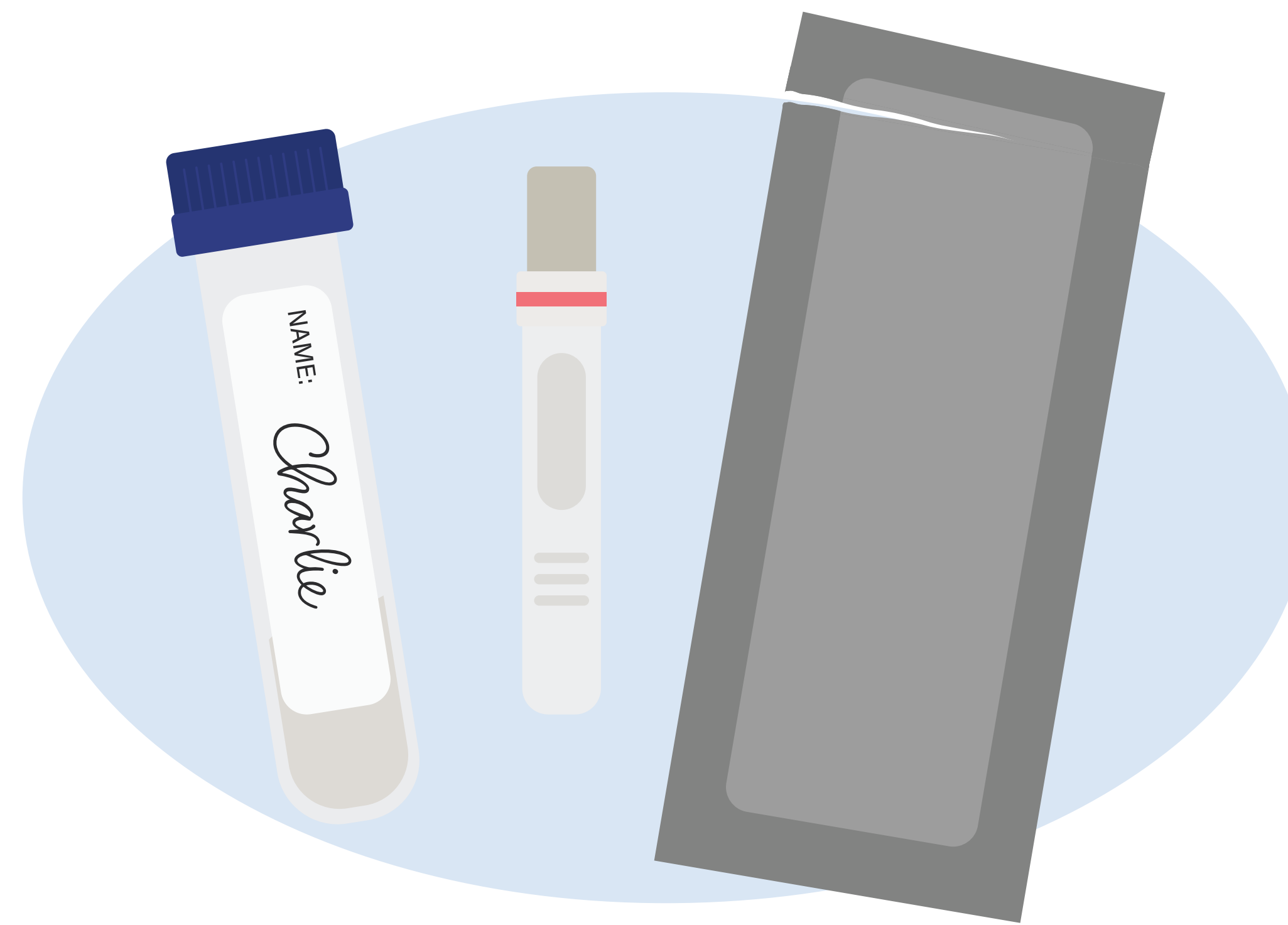


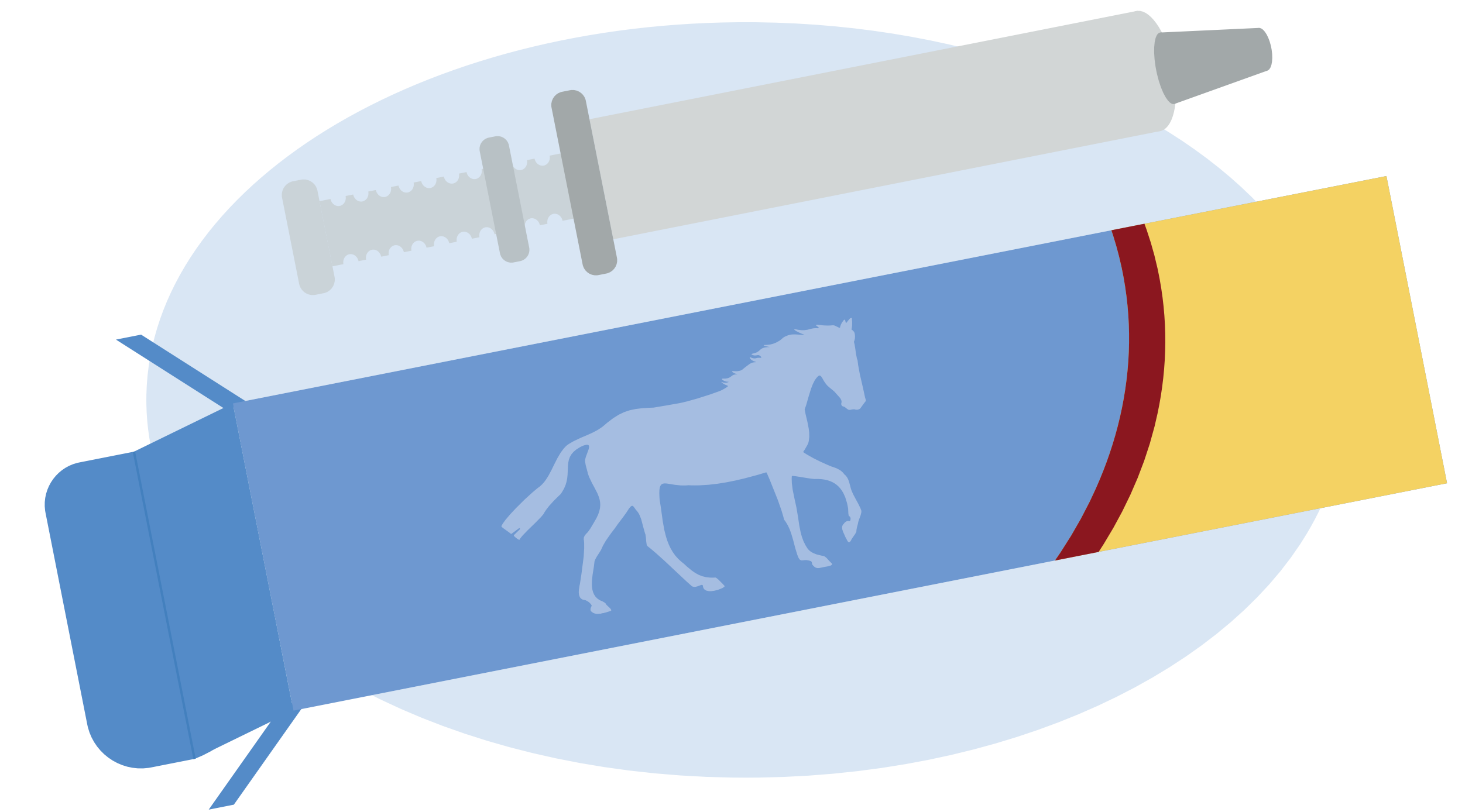
TOP TIPS FOR EFFECTIVE EQUINE PARASITE CONTROL



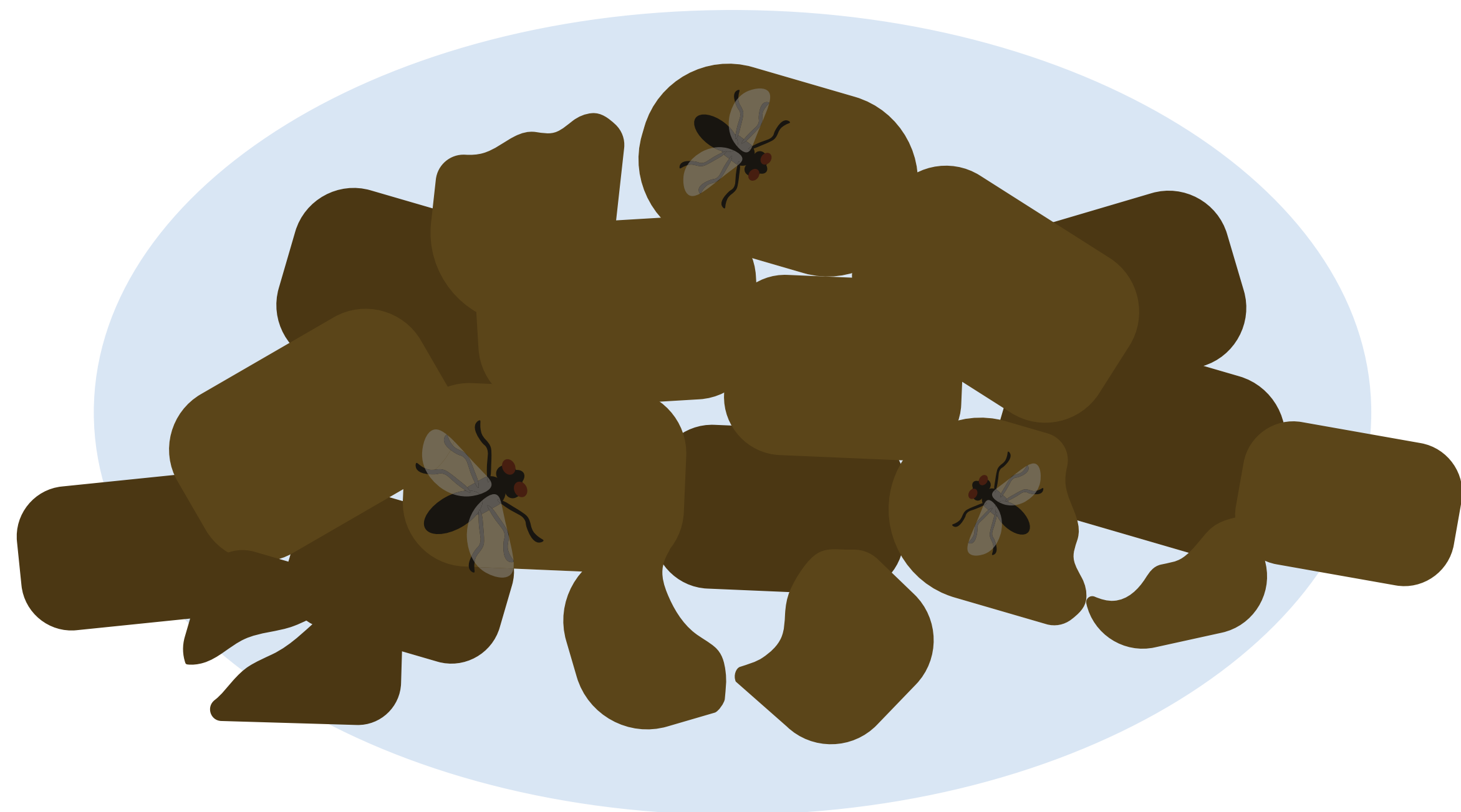
Perform routine faecal egg counts (FEC) and annual FEC reduction tests



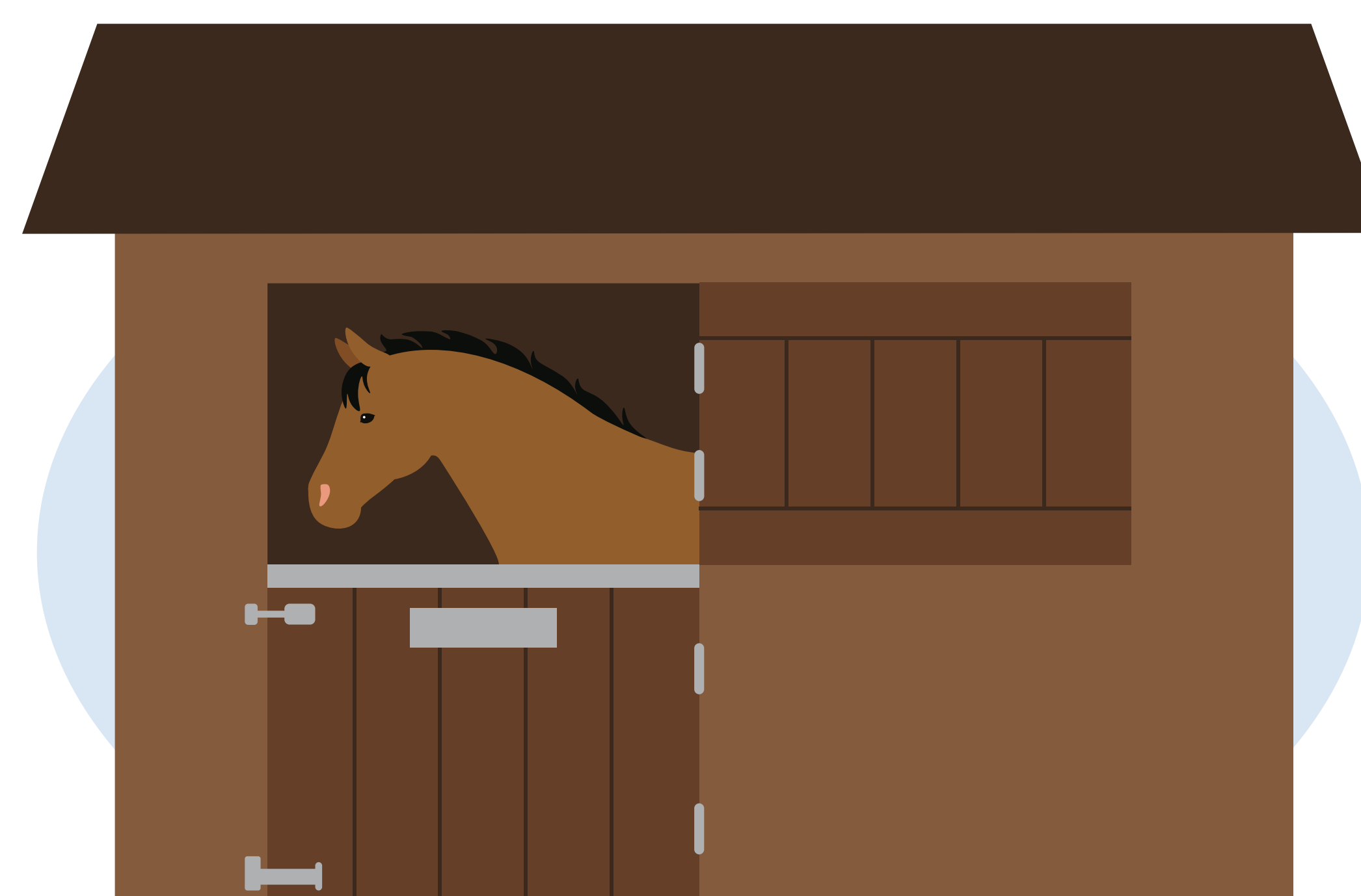
Use serum or saliva tests twice a year to assess tapeworm burdens



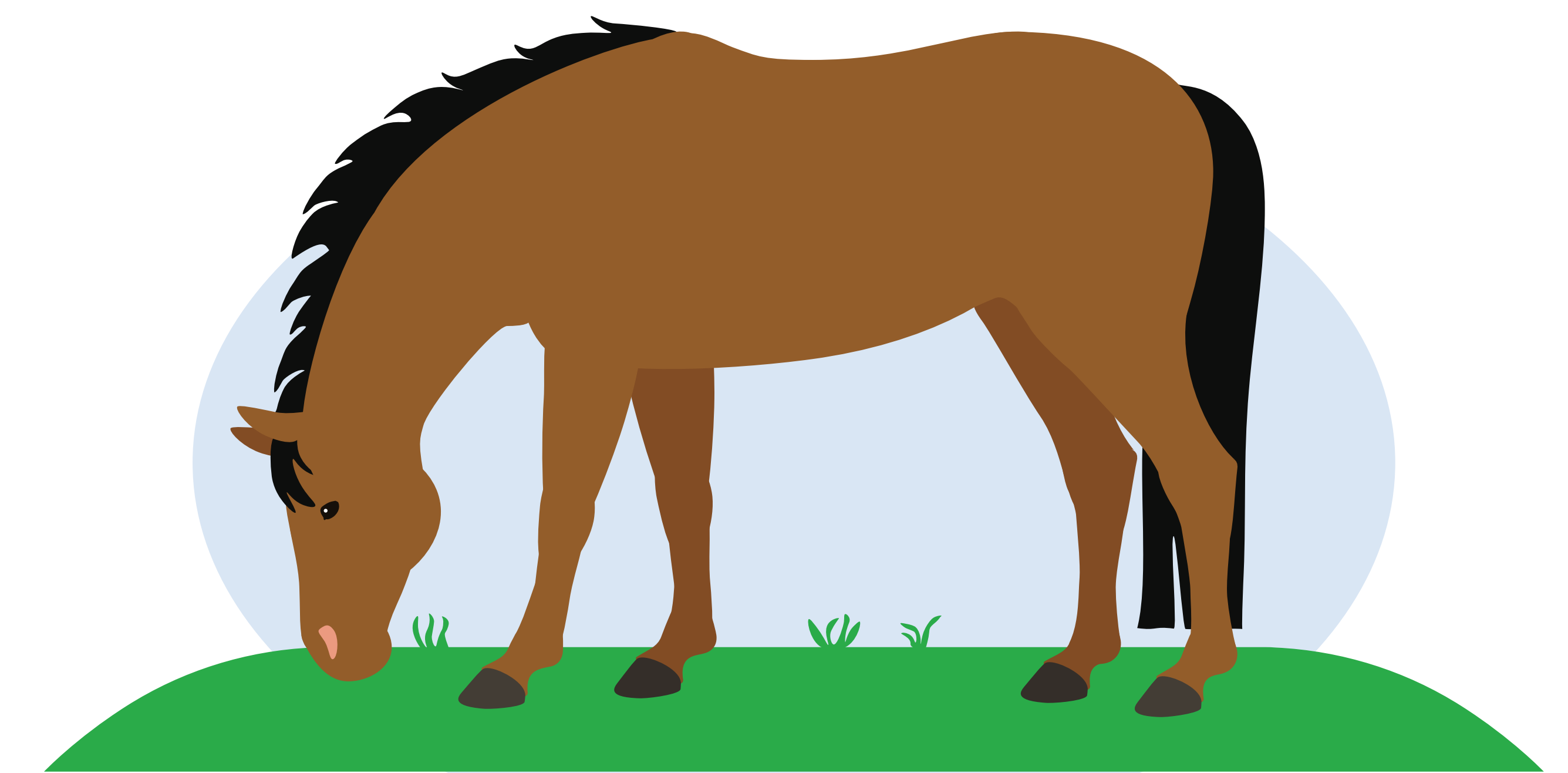
Avoid unnecessary anthelmintic use and consider alternative control methods



Regularly poo-pick fields to limit the spread of worms and other parasites



Quarantine and test new arrivals on the yard before turning out with resident horses



Rest fields and manage stock density as part of effective pasture control